

ARTÍCULO:

Description of *Theriella bertoncelloi* sp.n. from Southern Brazil (Araneae, Salticidae)

Augusto Braul

Faculdade de Biociências,
Pontifícia Universidade Católica
do Rio Grande do Sul,
Av. Ipiranga 6681,
90.619-900 – Porto Alegre,
RS, Brasil
frespera@yahoo.com

Arno Antonio Lise

Faculdade de Biociências,
Pontifícia Universidade Católica
do Rio Grande do Sul,
Av. Ipiranga 6681,
90.619-900 – RS, Brasil
lisearno@pucrs.br

Revista Ibérica de Aracnología

ISSN: 1576 - 9518.

Dep. Legal: Z-2656-2000.

Vol. 7, 30-VI-2003

Sección: Artículos y Notas.

Pp: 123–126

Edita:

Grupo Ibérico de Aracnología (GIA)

Grupo de trabajo en Aracnología
de la Sociedad Entomológica
Aragonesa (SEA)
Avda. Radio Juventud, 37
50012 Zaragoza (ESPAÑA)
Tef. 976 324415
Fax. 976 535697
C-elect.: amelic@telefonica.net
Director: A. Melic

Información sobre suscripción,
índices, resúmenes de artículos *on line*,
normas de publicación, etc. en:

Página web GIA:

<http://entomologia.rediris.es/gia>

Página web SEA:

<http://entomologia.rediris.es/sea>

**DESCRIPTION OF *THERIELLA BERTONCELLOI* SP.N.
FROM SOUTHERN BRAZIL (ARANEAE, SALTICIDAE)**

Augusto Braul & Arno Antonio Lise

Abstract

Theriella bertoncelloi sp.n. is described from material collected with ascendant and descendant arboreal photo-elector installed on trunks of the Brazilian pine (*Araucaria angustifolia*) in the "Centro de Pesquisa e Conservação da Natureza- Pró-Mata" in the district of Potreiro Velho, São Francisco de Paula, Rio Grande do Sul, Brazil.

Key words: Salticidae, *Theriella*, Taxonomy, Brazil.

Taxonomy: *Theriella bertoncelloi* sp. n.

Descripción de *Theriella bertoncelloi* sp. n. del sur del Brasil (Araneae, Salticidae)

Resumen

Se describe *Theriella bertoncelloi* sp.n. sobre material colectado con foto-elector de tronco en árboles del pino brasileño (*Araucaria angustifolia*) en el Centro de Pesquisas e Conservação da Natureza – Pró-Mata, en el distrito de Potreiro Velho, de São Francisco de Paula, Rio Grande do Sul, Brasil.

Palabras clave: Salticidae, *Theriella*, Taxonomía, Brasil.

Taxonomía: *Theriella bertoncelloi* sp. n.

Introducción

The genus *Theriella* was proposed by Braul & Lise (1996) by the dismemberment of the species allocated in the genus *Yepoella* Galiano, 1970. In this paper the authors maintained the type-species *Yepoella crassistylis* as the single representative of the genus and proposed a new combination for *Yepoella tenuistylis* under the name of *Theriella tenuistylis* (Galiano, 1970) and described *Theriella galianoae* as a new species.

Herein it is described *Thetiella bertoncelloi* from material collected with ascendant and descendant arboreal photo-electors on trunks of *Araucaria angustifolia* in the district of Potreiro Velho, municipality of São Francisco de Paula, Rio Grande do Sul state, Brazil.

Material and methods

The measurements follows Galiano (1963) and are expressed in millimeters. The abbreviations for the eyes and eyes interdistances are the ones used by the Arachnologists in systematic of spiders. The type-material was deposited in the collection of Arachnology of the Museu de Ciências e Tecnologia of Pontificia Universidade Católica do Rio Grande do Sul (MCTP). Paratypes were also deposited in the Museum of Comparative Zoology, Cambridge (MCZ), Museum National d'Histoire Naturel, Paris (MNHN), Museo Zoologico de la Universitá de Firenze, Italy (MZUF) and American Museum of Natural History, New York (AMNH).

***Theriella bertoncelloi* sp. n.**

Figs. 1-13.

TYPE LOCALITY AND TYPE MATERIAL: Potreiro Velho, São Francisco de Paula, Rio Grande do Sul, Brazil, (29°44'S – 29°58'S, 50°24'W – 50°12'W, 940m elevation), L. A. Bertoncello leg.. **Holotype**, male, I. 2002, (MCTP 13.478). **Paratypes:** ['Alotype'], female, same locality, date and collector (MCTP 13.479); 3 males and 3 females, X.2001 (MCTP 13.480); 1 male and 1 female, XII.2001 (MZUF 682); 1 male and 1 female, II.2002 (MNHN 13.175); 1 male and 1 female, II.2002 (AMNH); 1 male and 1 female, II.2002 (MCZ), all same locality and collector.

ETYMOLOGY: Named for the collector of the material.

DIAGNOSE: This species differs from *Theriella galianoae* by having a shorter tibial retrolateral apophysis, with a wider base, by having a bigger tegulum, by the more apical and retrolateral insertion of the embolus and by the differentiation of the apical portion of it (Figs. 5-10).

DESCRIPTION OF THE MALE HOLOTYPE:

Total length 3.44.

Carapace: 1.62 long, 1.18 wide, 0.70 height, dorsoventrally flattened (Fig.2), dark chestnut. Cephalic region with bright hairs and with scarce white hairs scattered distributed.

Chelicerae 0.70 long (without claw), 0.24 wide, orange. Anterior face wrinkled and striated, mesial face scavated (Fig.2). Promargin of the cheliceral furrow with one bifid keel (Fig.2), retromargin with one single teeth, wider on the basis. Endites 0.56 long, 0.38 wide, same color of the chelicerae. margin.Promargin with a dense scopula. Retromargin with a short tubercle. Labium 0.32 long, 0.26 wide, same color of the chelicerae.

Clipeus: height null.

Eye diameter and interdistances: AME 0.30, ALE 0.20, PLE 0.18, ALE-PME 0.20, PME-PLE 0.18. Ocular area 0.72 long, 1.06 anterior wide, 0.96 posterior wide, on dorsal view.

Thoracic fovea 0.24, backward of a tangent line passed behind of the PLE

Abdomen: 1.82 long, 1.24 wide (on the posterior third), 1.08 height, ovaled, chestnut olivaceous with irregular bright spots and white hairs scattered. Venter with a large bright area of same color of dorsum. Base of spinnerets bright and apex of same color of abdomen.

Legs: I. black in color, ticker than the others. Femur and tibia very tick, cylindric. II. coxae and trochanter yellow, femur chestnut olivaceous, the remaining articles with irregular chestnut spots. III and IV same as legs II. Relative length IV, I, III, II. Legs spinulation: I. femur d.1.1.1, ra.1; tibia v.2.2.2; metatarsus v.2.2. II. femur d.1.1.1, r.1; tibia v.1.1.1, pa.1; metatarsus v.2.2, pa.1. III. femur d.1.1.1, ra.1; tibia va.1, rb.1, pa.1; metatarsus 5 apical. IV. femur d.1.1.1; metatarsus 3 apical. All legs with many dorsal trichobothriae on femur, patella, tibia, metatarsus and tarsus.

Measurement of legs: I. femur 1.00, patella 0.68, tibia 0.74, metatarsus 0.50, tarsus 0.38, total 3.30; II. 0.80/0.50/0.48/0.38/0.30/2.46; III.0.90/0.34/0.64/0.54/0.40/2.82; IV.1.00/0.50/0.70/0.66/0.36/3.22.

Palpus. Tibia with a single retrolateral apophysis, tegulum big with one basal apophysis pointed to the prolateral face and another on the middle. Embolus arising from the apex of the prolateral margin of the tegulum, base wide and apex coiled (figs. 5-10).

DESCRIPTION OF THE FEMALE ['ALOTYPE']:

Total length 3.46.

Carapace 1.62 long, 1.10 wide, 0.64 height, same shape of male.

Chelicerae 0.48 long (without claw), 0.32 wide, same color as male with one tooth on the retromargin and two on the promargin of the cheliceral furrow. Endites 0.48 long, 0.30 wide, same color as in the male, without projections. Labium 0.26 long, 0.28 wide, same as in the male.

Height of **clipeus** null.

Eyes diameter and interdistances: AME 0.30, ALE 0.20, PLE 0.16, ALE-PME 0.20, PME-PLE 0.18. Ocular area 0.70 long, anterior width 0.98, posterior width 0.96, on dorsal view.

Thoracic fovea 0.26 forward of a line passed on the posterior margin of the PLE.

Abdomen 1.86 long, 1.18 wide, 1.00 height, it shape as in the male with more white hairs dorsally disposed. Spinnerets as in the male.

Legs: I coxa and trochanter chestnut, the other articles as in the male. II. Coxa and trochanter yellow. III and IV same as II, all with many dorsal trichobothriae. Relative length and spinulation same as in the male.

Legs measurement: I. femur 0.80, patella 0.50, tibia 0.52, metatarsus 0.42, tarsus 0.38, total 2.62. II. 0.68/0.36/0.40/0.30/0.30/2.12; III. 0.78/0.36/0.50/0.44/0.38/2.46; IV. 0.86/0.44/0.64/0.62/0.40/2.96.

Epigynum (Figs. 3,4,11) with a large elliptic atrium. Spermatecae almost spherical.

EXAMINED MATERIAL: Only the typical series

INTRASPECIFIC VARIATION: Ten males. Total length 3.63 (3.32-4.21). Carapace 1.72 (1.56-1.92) long, 1.14 (0.88-1.28) wide. Abdomen 1.89 (1.72-2.12) long. Seven females. Total length 3.64 (3.12-4.18). Carapace 1.50 (1.16-1.64) long, 1.01 (0.88-1.08) wide. Abdomen 2.04 (1.56-2.44) long.

GEOGRAPHIC DISTRIBUTION: Known only for the type locality, BRAZIL, Rio Grande do Sul, São Francisco de Paula, Potreiro Velho, Centro de Pesquisa e Conservação da Natureza - Pró-Mata.

Bibliography

- BRAUL, A. & A. A. LISE 1996. *Theriella*, um novo gênero de Salticidae para a região Neotropical (Araneae). *Biociências*, Porto Alegre, 4(2): 171-177.
- GALIANO, M. E. 1963. Las especies americanas de arañas de la familia Salticidae, descritas por Eugène Simon. Redescriptiones basadas em los ejemplares típicos. *Physis*, Buenos Aires, 23(66): 273-470.
- GALIANO, M. E. 1970. Description de *Yepoella*, un nuevo genero de Salticidae (Araneae). *Revista del Museo Argentino de Ciencias Naturales "Bernardino Rivadavia"*, 10(11): 156-173.

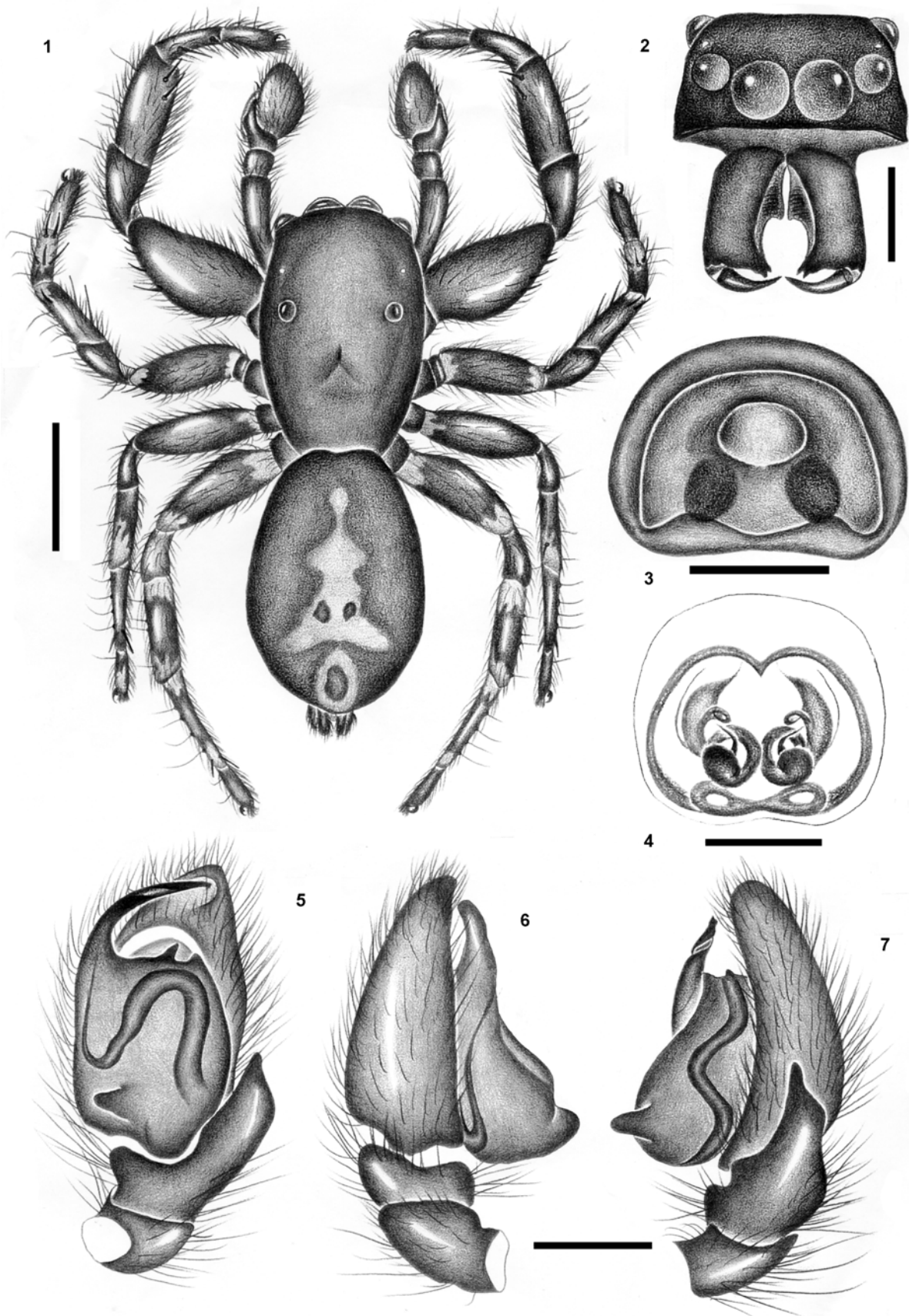


Fig. 1- 7. *Theriella bertoncelloi* sp. n. 1-2: Male; 1: dorsal view; 2: carapace and chelicerae, frontal view; 3-4: Female epigynum. 3: ventral view; 4: dorsal view; 5-7: Male palpus. 5: ventral; 6: prolateral; 7: retrolateral. Scale bar. 1 = 1mm, 2-7 = 0.25mm.

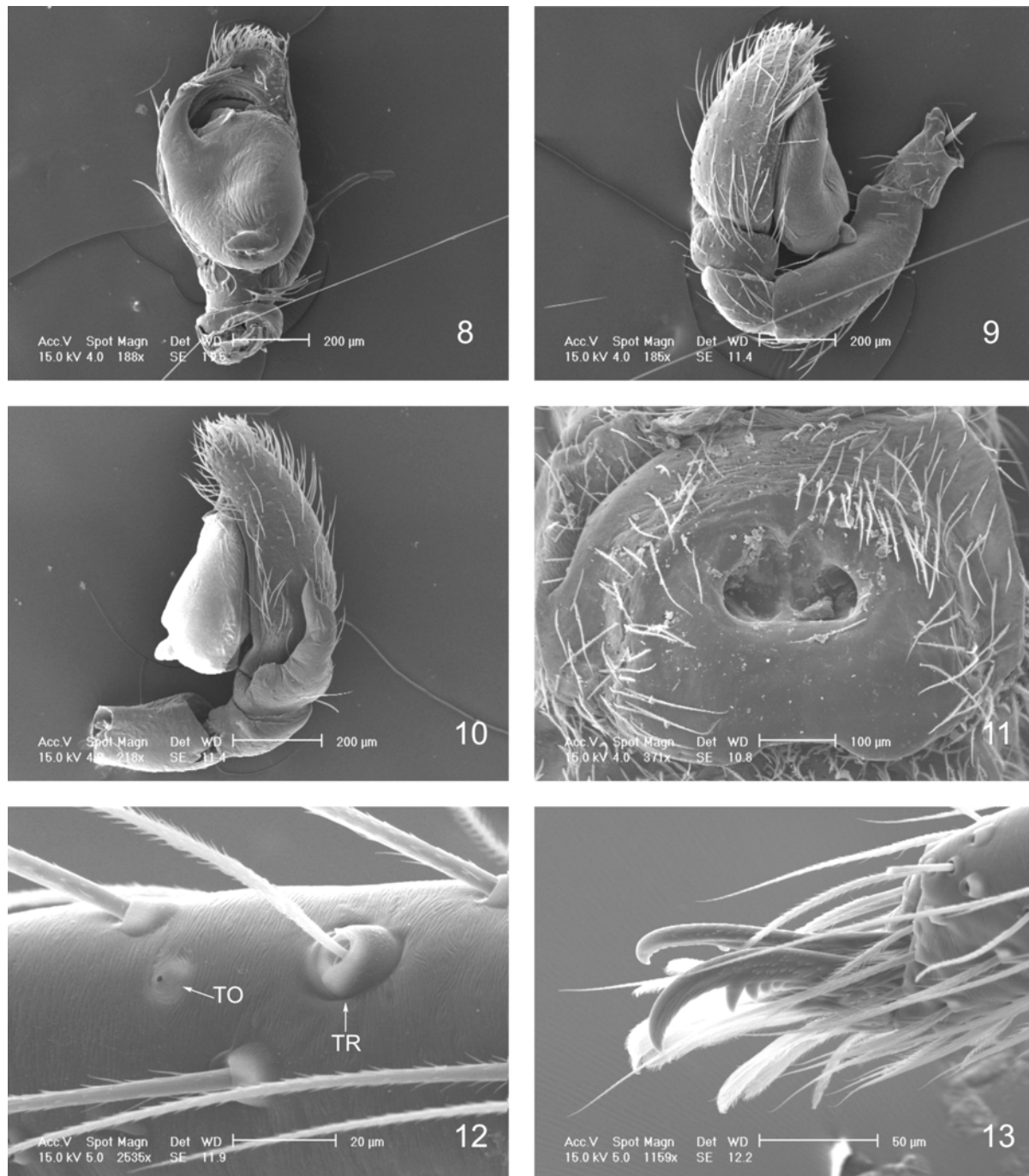


Fig. 8-13. *Theriella bertoncelloi* sp. n. **8-9:** Male palpus. **8:** ventral; **9:** prolateral; **10:** retrolateral; **11:** female epigynum; **12:** tarsus; **13:** claws. Arrows. TO. tarsal organ; TR. trichobothria.